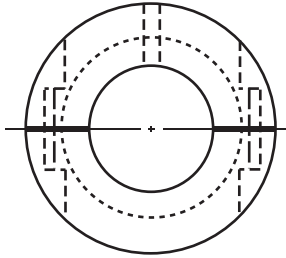
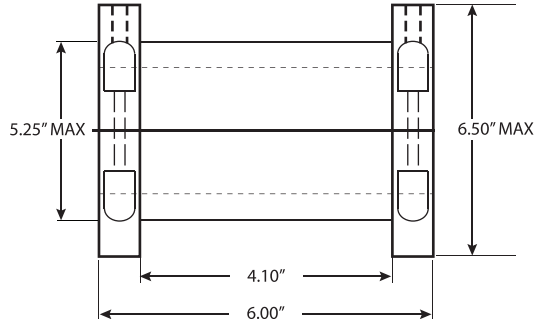


## Static Sleeve Bearings

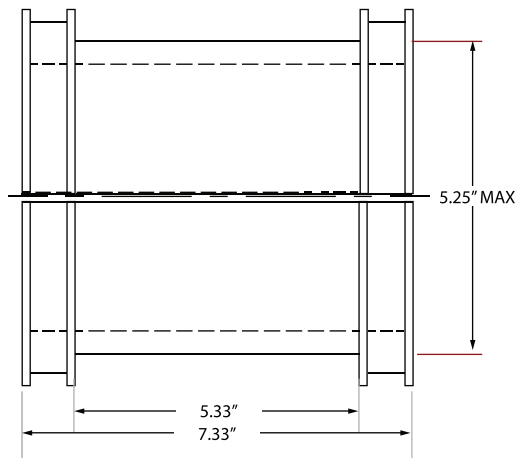
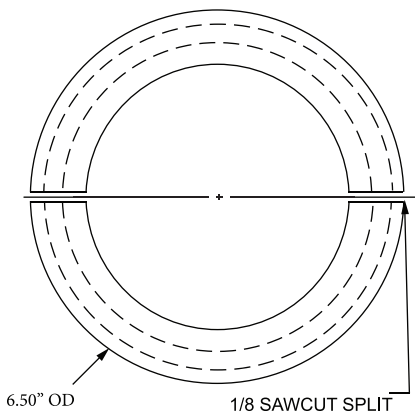


Designed for use with  
HMAX Style Polymer Sprockets



Standard static sleeves provide a quick and cost effective replacement to wall bearings. By simply removing the existing idler sprockets and installing static sleeve bearings on the shafts, you can reuse your sprockets (modification may be required) or with new ones. Static sleeve bearings provide significant improvement in service life by decreasing the drag on the chain.

## Wide Profile Static Sleeve Bearing (Clamping Band Style)



Wide Profile Static Sleeve Bearings are required for use with HMAX style Cast Nylon Sprockets (5.25" LTB) when static sleeve bearings are required.

Wide profile static sleeve bearings are assembled with the use of clamping bands that pull the two halves together without the need for nuts and bolts. They are designed to work with 5.25" LTB sprockets such as MAXCO Chains's Cast Nylon Sprockets.

Dimensions Are Given In Inches

Dimensions subject to change

Sleeve Bearing	LTB (length-thru-bore)	Bearing Face Width	Maximum Shaft Diameter	Min. Wall Thickness	Available Materials	Average Approx. Weight
Standard	6.000	4.100	4.9375	.2550	UHMW / Nyloil	4.00 lbs.
Wide Profile	7.330	5.330	4.9375	.2550	UHMW / Nyloil	7.00 lbs.