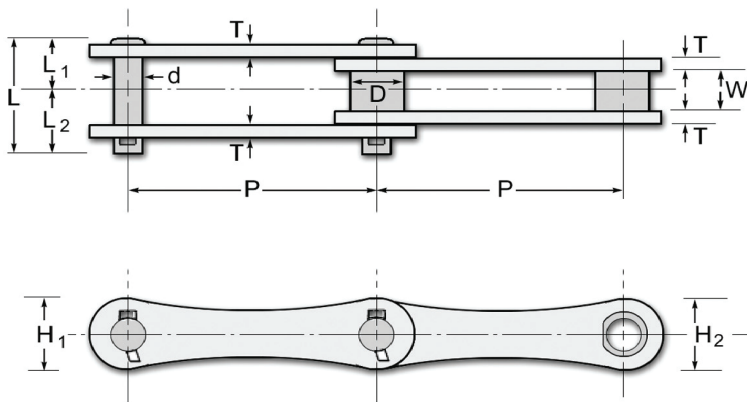
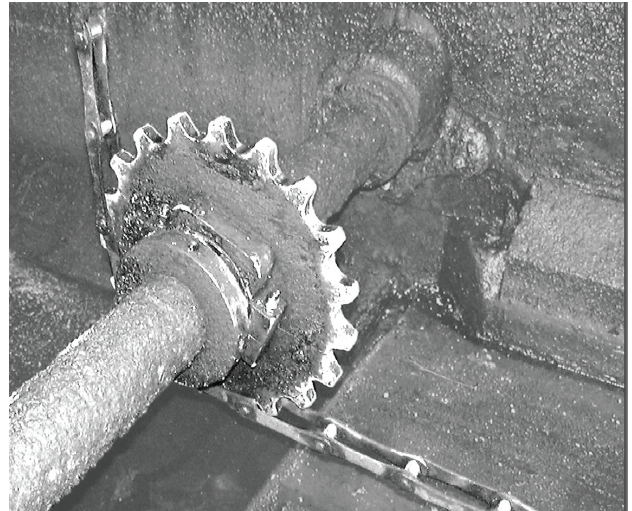


SAV 715 Stainless Steel Chain



SAV715 Chain, the first stainless steel curved sidebar chain equivalent. Lightweight, yet with a higher strength-to-weight ratio than cast chain, SAV715 is fabricated of 403 stainless steel and has been proven superior for high load applications and has readily available several common attachment link designs for Bar Screen and Grit Collector requirements.

The SAV715 is the result of innovative design and the application of unique metals technology providing a collector chain of unmatched service life and application potential for a wide range of service requirements. With over 4,000,000 feet of chain in service worldwide and a typical service life measured in decades, the SAV715 is the ideal chain for collector chain service.

Dimensions and Strength of SAV715 Chain

Chain No.	Pitch P (in.)	Min. Ultimate Strength (lbs.)	Min. Weight (lbs./ft.)	Barrel (min.)		Pin				Side Bars (min.)			
				Outside Dia. D	Width W	Dia. d	Length (in.)			Pin Link (in.)		Bush Link (in.)	
							L	L ₁	L ₂	H ₁	T	H ₂	T
SAV 715	6.00	29,000	3.7	3.7	1.015	0.569	2.843	1.281	1.562	1.54	.224	1.85	.224



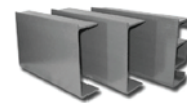
SPROCKETS



NON-METALLIC CHAINS



STAINLESS CHAINS



FIBERGLASS FLIGHTS

SAV 715 Stainless Steel Chain

SAV715 Chain is adaptable to a wide range of wastewater applications from rectangular clarifier to grit collection, bar screens, DAF and API service. SAV715 handles the most demanding applications without problem. These chains feature a 304 grade stainless steel "J" cotter for easy assembly of the chain.

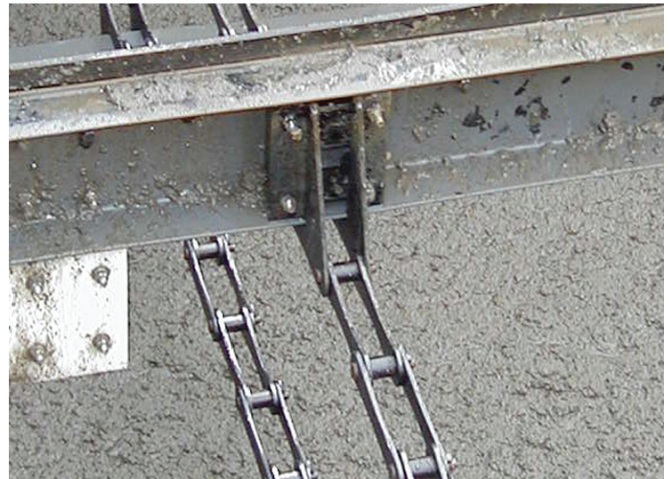
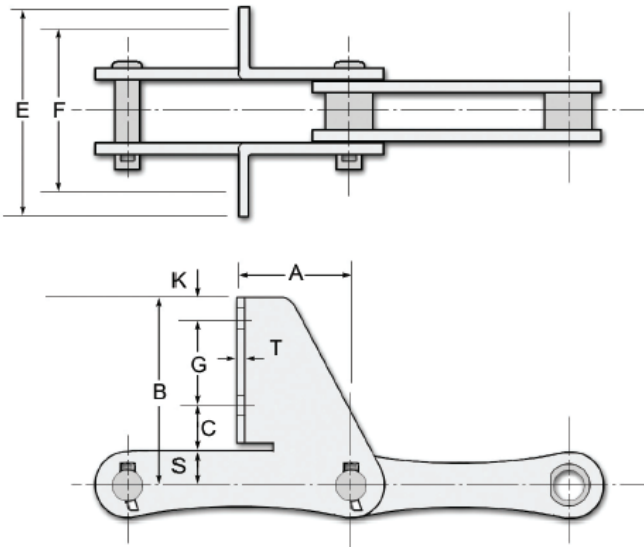
Also available from MAXCO Chain for SAV715 is the Hybrid Replaceable tooth sprocket. Hardened stainless steel teeth resists grit and other abrasives, yet the individual tooth sections are easily replaced with simple tools. The chain does not need to be taken apart to perform the task. This procedure is less intrusive than having to replace entire sprockets or sprocket tooth segments. Assemblies with 316 stainless steel hardware.

SAV715 Hybrid Sprocket



Replaceable Individual Teeth
Hardened 410 Stainless Steel
Works with Steel or Non-metallic Hub

"F" Style Attachment



Dimensions of "F" Type Attachment

Attachment Part No.	Dimension										Attachment Nominal Weight (lbs./ea.)
	A	B	C	E	F	G	K	S	T	Ø	
F-226/715	3	6.1093	1.5	5.5	3.75	2.625	1.093	.890	.234	.437	4.5
F-228/715	3	7.875	1.484	5.5	3.75	4.5	1	.890	.234	.437	5.4