

## Non-Metallic Shearpin Sprocket Assembly



HEAVY Duty Jawclutch / Shear Pin Sprocket assemblies from MAXCO Chain feature Cast Nylon bodies and sprockets with a universal engagement design. All non-metallic construction means no lubrication – no grease, no zerk fittings, eliminates possibility of corrosion of the shaft causing the sprocket to freeze to the shaft. Provided with aluminum T-6 shear pins sized to the appropriate neck diameter for the specific application, available with 10 and 11 tooth sprockets. Use with cast iron, stainless steel or non-metallic chains. Lightweight and easy to install with standard keyway and set screw engagement. Each shear pin Jaw Clutch assembly comes with a trip arm for use with optional limit switch to signal shear pin has tripped. The omni-directional hub design insures smooth engagement of the drive hub when placed in service with either direction. Contact Senqcia Maxco, Ltd. for additional details –specifications on reverse.



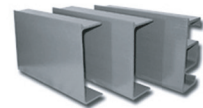
SPROCKETS



NON-METALLIC CHAINS



STAINLESS CHAINS



FIBERGLASS FLIGHTS